

### RCMI PROGRAM

PO Box 365067

San Juan PR 00936-5067

Tel: (787) 763-9401

Fax: (787) 758-5206

E-mail: [rcmi.rcm@upr.edu](mailto:rcmi.rcm@upr.edu)

URL: <http://rcmi.rcm.upr.edu>

### ADMINISTRATION

Emma Fernández, Ph.D.  
Principal Investigator

### KEY ACTIVITY DIRECTORS

Carmen Cadilla, Ph.D.  
Gregory Quirk, Ph.D.  
Loyda Meléndez, Ph.D.  
Mark Miller, Ph.D.  
José Rodríguez-Medina, Ph.D.  
Adelfa Serrano, Ph.D.  
José G. Conde, M.D., M.P.H.

### KEY ACTIVITY LEADERS

Marcia Carlyn, Ph.D.  
Idalí Martínez, Ph.D.  
Luis J. Montaner, D.V.M.  
José G. Cordero, M.D., M.P.H.  
Liza Anzalota, M.D., M.P.H.

20

Number of biomedical doctoral degrees (PhDs) awarded by the School of Medicine, UPR Medical Sciences Campus at the 2014 Commencement Ceremony.



@rcmienews

### VISIT EXTERNAL ADVISORY COMMITTEE



On May 8-9, 2014, the RCMI Program received the visit of the External Advisory Committee (EAC): Dr. Susan Opava, Chair; Dr. Patrick Emery; Mr. Ted Hanns, and Dr. Susan Weintraub. The Committee met with RCMI Staff and investigators; Dr. Edgar Colón, Interim Chancellor; Dr. Ricardo González, Dean of Academic Affairs, and Internal Advisory Committee members.

As part of the visit, Dr. Susan Opava was keynote speaker at a special meeting with representatives of the Puerto Rico Trust for Science, Technology and Research. Her presentation "The Ivory Tower: Open for Business" highlighted the importance of technology transfer in the research agenda.



Visits to RCMI-supported research facilities were also conducted. The annual report of the EAC is expected in August, 2014.

### COLLABORATIONS AND PARTNERSHIPS



A joint meeting of institutional liaisons and Advisory Board members of the Women and Inclusion in Academic Medicine (WIAM) project was held at Harvard Medical School on May 13, 2014. Dr. Joan Reede, Dean for Diversity and Community Partnerships and Principal Investigator, presided the meeting. The agenda included updates of activities conducted and current project status. Next steps related to institutional engagement and collaborations after project completion were also discussed. Advisory Board member, Dr. Emma Fernández-Repollet, participated in the meeting.

### RESEARCH TRAINING ACTIVITIES

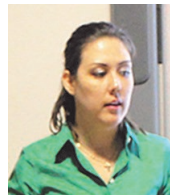


The Course-Workshop "Medical Entomology" was conducted on May 27-30, 2014. Topics covered included the transmission of infectious diseases such as dengue, malaria, leishmania, chagas and trypanosomiasis, as well as medical entomology research and approaches for disease control. Invited speakers included: George Dimopoulos, PhD, MBA Professor, Bloomberg School of Public Health, Johns Hopkins University; Sarah Marie Short, PhD, Post-doctoral Fellow, Bloomberg School of Public Health, Johns Hopkins University, and Adelfa E. Serrano, PhD Professor, School of Medicine, UPR MSC.

### SEMINARS AND WORKSHOPS



*The Forests You Need*  
May 6, 2014  
Presenter: Dr. Frank Wadsworth



*Qiagen Ingenuity Pathway Analysis*  
May 13-14, 2014  
Presenter: Dr. Kristy Clayd



*Introduction to Cytoscape: Network Visualization Software*  
May 13, 2014  
*The Roles of Bioinformaticist*  
May 14, 2014  
Presenter: Marci Brandenburg, MS



*Endonuclease Network: A Cross-talk Between Apoptotic Endonucleases*  
May 13, 2014  
Presenter: Dr. Alexei G. Basnakian



*Epigenome Analysis of Blood Stem Cells*  
May 14, 2014  
Presenter: Dr. Deqiang Sun



*Parrots of the Caribbean: From a local community project to a genome model of island evolution*  
May 20, 2014  
Presenter: Dr. Taras K. Oleksyk



*Biological Network Predictions Using Machine Learning Techniques*  
May 22, 2014  
Presenter: Abiel Roche-Lima, PhD candidate



*Mechanisms of Tumor Cell Invasion*  
May 23, 2014  
Presenter: Dr. Crislyn D'Souza-Schorey

### ISMHHD ABSTRACT DEADLINE



**Abstracts Submission Deadline: July 1, 2014**